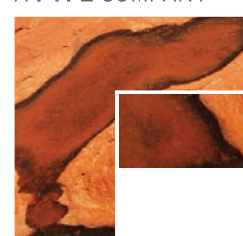
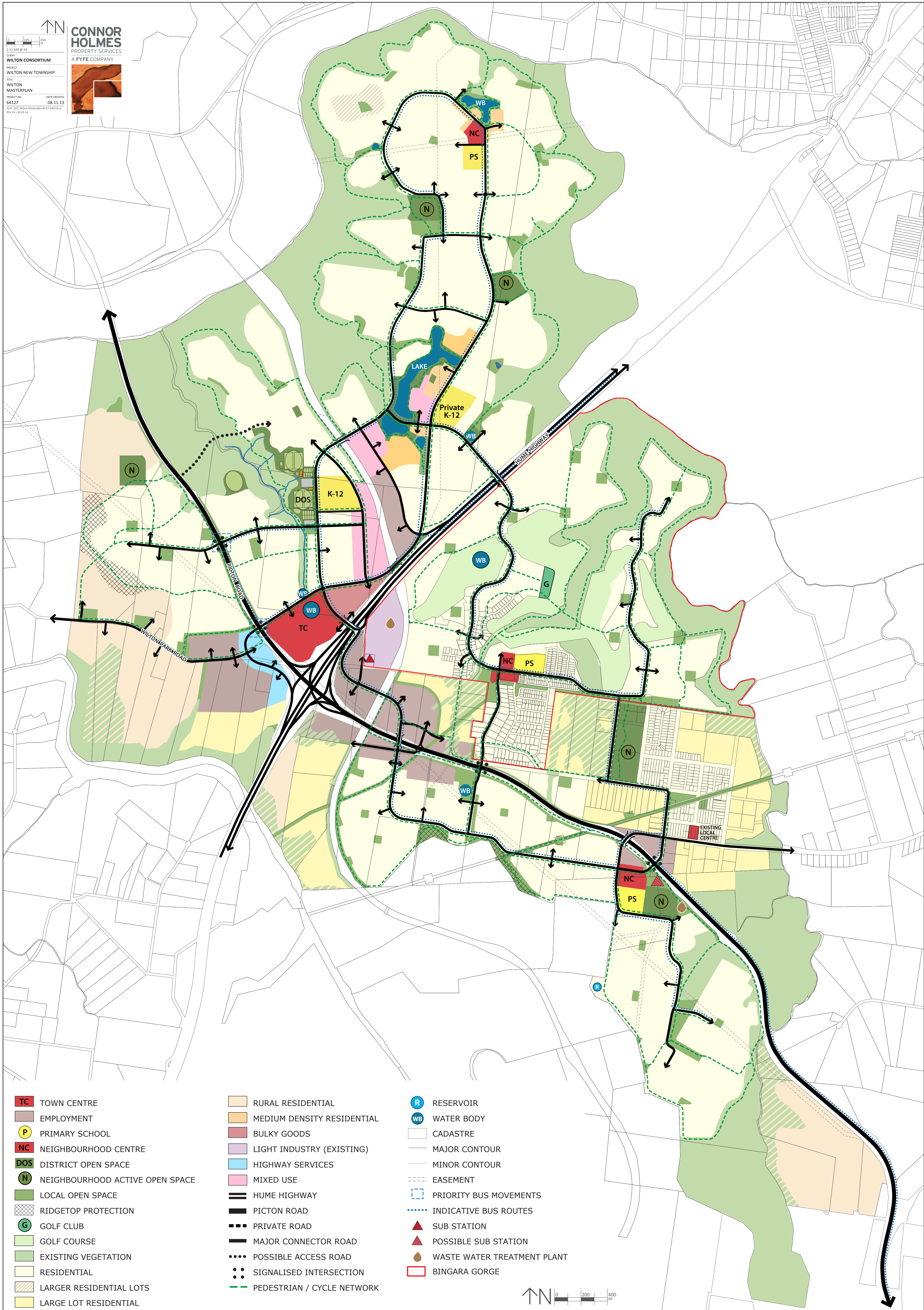




**CONNOR HOLMES**  
PROPERTY SERVICES  
A FYFE COMPANY



CLIENT  
**WILTON CONSORTIUM**  
PROJECT  
**WILTON NEW TOWNSHIP**  
TITLE  
**WILTON MASTERPLAN**  
PROJECT NO.  
**64127**  
DATE CREATED  
**08.11.13**  
G27\_307\_Wilton Masterplan P13 100%  
REV 14 - 30.05.14



- TC TOWN CENTRE
- EMPLOYMENT
- P PRIMARY SCHOOL
- NC NEIGHBOURHOOD CENTRE
- DOS DISTRICT OPEN SPACE
- N NEIGHBOURHOOD ACTIVE OPEN SPACE
- LOCAL OPEN SPACE
- RIDGETOP PROTECTION
- G GOLF CLUB
- GOLF COURSE
- EXISTING VEGETATION
- RESIDENTIAL
- LARGER RESIDENTIAL LOTS
- LARGE LOT RESIDENTIAL

- RURAL RESIDENTIAL
- MEDIUM DENSITY RESIDENTIAL
- BULKY GOODS
- LIGHT INDUSTRY (EXISTING)
- HIGHWAY SERVICES
- MIXED USE
- HUME HIGHWAY
- PICTON ROAD
- PRIVATE ROAD
- MAJOR CONNECTOR ROAD
- POSSIBLE ACCESS ROAD
- SIGNALISED INTERSECTION
- PEDESTRIAN / CYCLE NETWORK

- R RESERVOIR
- WB WATER BODY
- CADASTRE
- MAJOR CONTOUR
- MINOR CONTOUR
- EASEMENT
- PRIORITY BUS MOVEMENTS
- INDICATIVE BUS ROUTES
- SUB STATION
- POSSIBLE SUB STATION
- WASTE WATER TREATMENT PLANT
- BINGARA GORGE

